

Supported Commands

1. Text Display

Command

```
TEXT**{Main Title}**{Subtitle}**{Multi Line Message}
```

Examples:

1. `TEXT**Main Title**Subtitle Text**This is a multi-line message.

Use HTML "br" tag for line breaks.`



```
TEXT**This is a very long main title to test text wrapping behavior  
on screen display**Subtitle Goes Here**This is an extremely long  
message line intended to check how well the device handles multiline  
display, wrapping, and any kind of overflow text rendering.  
<br><br>Does it scroll or cut off?
```



Command Fields

Note: "l" takes the smallest area and "W" takes largest area in case of english alphabets.

{Main Title}

- Minimum Characters: 0
- Maximum Characters: 60 (for "l"), 24 (for "H"), 18 (for "W")
- Maximum Number of Lines: 2

{Subtitle}

- Minimum Characters: 0
- Maximum Characters: 44 (for "l"), 15 (for "H"), 12 (for "W")
- Maximum Number of Lines: 1

{Multi Line Message}

- Minimum Characters: 0
- Maximum Characters: 399 (for "l"), 180 (for "H"), 140 (for "W")
- Number of Lines: 8 (for "l"), 10 (for "H" and "W")

Note: If the characters in multi line message is more than 399 characters, the device will restart.

i
 tag is used for next line

2. QR Display

Command

```
QR**{Amount with Currency}**{Action Text}**{Dynamic QR Token}
```

Examples:

```
QR**Rs. 1234567890111**Scan to pay**https://yarsa.tech/products/nizipos/b30
```



Command Fields

{Amount with Currency}

- Minimum Characters: 0
- Maximum Characters: 14 digits("Rs. " as prefix)
- Number of Lines: 1

{Action Text}

- Minimum Characters: 0
- Maximum Characters: 31 ("I"), 12("H"), 9("W")
- Number of Lines: 1

{Dynamic QR Token}

- Minimum Characters: 0
- Maximum Characters: 1003 (QR size: 37.5mm), > 1003 (QR size: 30mm)

3. Success

Command

```
PASS**{Amount with Currency}**{Message}
```

Examples:

```
PASS**Rs. 560.50**Payment successful
```



Command Fields

Amount with Currency

- Minimum Characters: 0
- Maximum Characters: 23 digits (without "Rs. " prefix at the beginning)
- Number of Lines:2

Message

- Minimum Characters: 0
- Maximum Characters: 385 ("I"), 126 ("H"), 98("W")
- Number of Lines: 7

4. Failure

Command

```
FAIL**{Amount with Currency}**{Message}
```

Examples:

```
FAIL**Rs. 560.50**Payment Failed
```



Command Fields

Amount

- Minimum Characters: 0
- Maximum Characters: 23 digits (without "Rs. " prefix at the beginning)
- Number of Lines:2

Message

- Minimum Characters: 0
- Maximum Characters: 385 ("I"), 126 ("H"), 98("W")
- Number of Lines: 7

5. Information

Command

```
INFO**{Title}**{Message}
```

Examples:

```
INFO**Important**Keep Device Connected
```



Command Fields

Title

- Minimum Characters: 0
- Maximum Characters: 96 ("I"), 34 ("H"), 26("W")
- Number of Lines up to:2

Message

- Minimum Characters: 0
- Maximum Characters: 385 ("I"), 126 ("H"), 98("W")
- Number of Lines: 7

6. Loading

Command

```
WAIT**{Amount with Currency}**{Message}
```

Examples:

```
WAIT**Rs. 560.50**Please wait
```



Command Fields

Amount with Currency

- Minimum Characters: 0
- Maximum Characters: 23 digits (without "Rs. " prefix at the beginning)
- Number of Lines: 2

Message

- Minimum Characters: 0
- Maximum Characters: 385 ("I"), 126 ("H"), 98 ("W")
- Number of Lines: 7

7. Warning

Command

```
WARN**{Title}**{Message}
```

Examples:

```
WARN**Device Not Ready**Please wait
```



Command Fields

Title

- Minimum Characters: 0
- Maximum Characters: 96 ("I"), 34("H"), 26 ("W")
- Number of Lines: 2

Message

- Minimum Characters: 0
- Maximum Characters: 385 ("I"), 126 ("H"), 98 ("W")
- Number of Lines: 7

8. Idle Screen (Show Logo)

Command

IDLE

Examples:



9. Reset Device

Command

RESET

- To restart the device

10. Screen Time

Command

SCREENTIME**{time_in_second}

- Screen time should be between 30-300s.
- After the {time_in_second} seconds, the device will enter sleep mode which will be waked immediately after sending any of the valid commands.

Example

SCREENTIME**300

11. Wake Screen

Command

WAKE

- Wake up device from sleep mode.

12. Upload Dynamic Images

- Drag and drop the multiple images (in online simulator site) or the code is available in python sdk file.

Flow Diagram

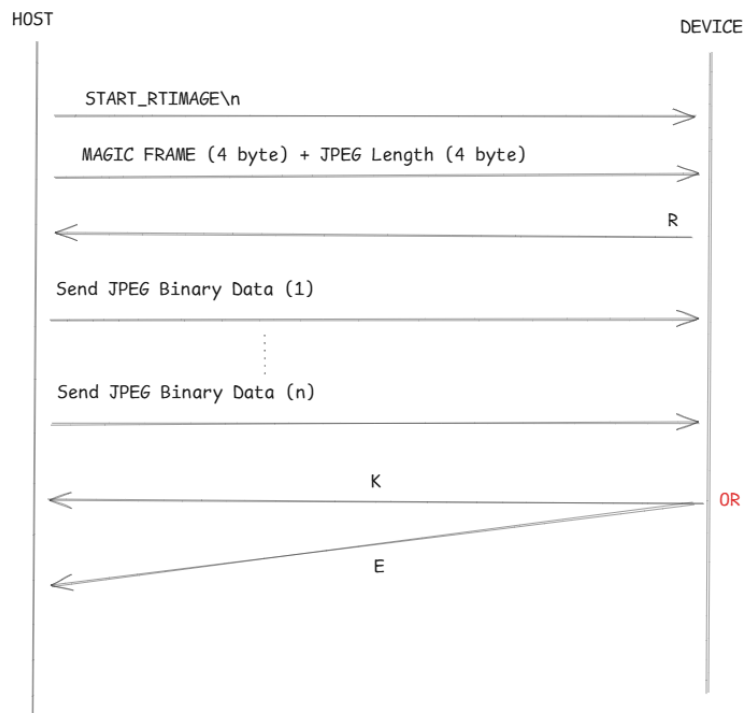


Image Specifications

Type: JPEG baseline

Dimension: 240 * 320

Maximum Individual image size: $\leq 30\text{kb}$